

SLOANE INTERNATIONAL DEVELOPMENTS

The Edridge • 4-20 Edridge Road • London • United Kingdom

GUIDE PRICE:

Apartments from  
**243,500 GBP (2 years)**  
**280,025 GBP (5 years)**

KEY LUXURY FACTS:

- Floor To Ceiling Glass
- High Vaulted Ceilings
- Real Wood Floors
- Granite Worktops
- 2500Sq Ft Pro-Gym
- 24 Hr Security & Concierge
- 2000 Sq Ft - Residents Zen Massage & Beauty Spa
- Childrens School
- Swimming Pool
- Roof Gardens

KEY DISTANCES FROM THE EDRIDGE:

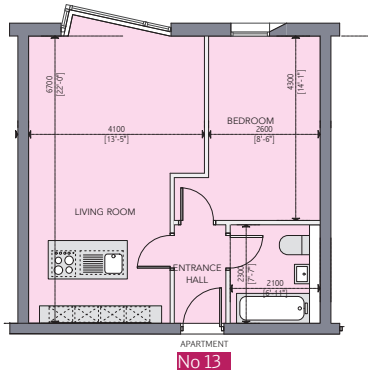
Big Ben	11 Miles
Knightsbridge	12 Miles
Heathrow	23 Miles
Gatwick	18 Miles
City Airport	17 Miles
Luton Airport	47 Miles

EXTERNAL ELEVATION

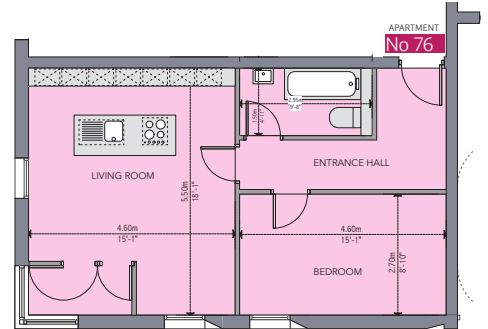


1 BEDROOM APARTMENT FLOORPLAN

Type A



Type B



LOCATION MAPS



MAP 1 LONDON MAP SHOWING PROXIMITY TO LONDON AIRPORTS



MAP 2 SHOWING PROXIMITY TO KEY LONDON LAND MARKS

FINANCIAL GRAPHS

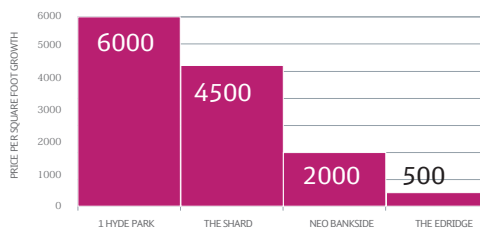


TABLE 1 PRICE PER SQUARE FOOT COMPARISONS OF CURRENT LONDON DEVELOPMENTS

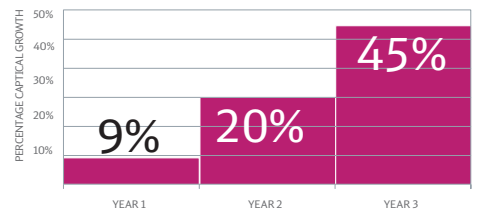


TABLE 2 PROJECTED GROWTH PER YEAR IN PERCENTAGE TERMS SHOWS THE TOTAL CAPITAL UPLIFT TO BE AROUND CIRCA 45% OVER 3 YEARS

2 YEAR PAYMENT PLAN

	On signing the contract	2 Months from the earlier payment.	2 Months from the earlier payment.	2 Months from the earlier payment.	3 Months from the earlier payment.	3 Months from the earlier payment.	3 Months from the earlier payment.	3 Months from the earlier payment.	On Completion
%	10%	10%	10%	10%	10%	10%	10%	10%	20%

5 YEAR PAYMENT PLAN

	On signing the contract	1-4 Months at % per month	5-8 Months at % per month	9-52 Months at % per month.	53-60 Months at % per month
%	10%	5%	2.5%	1.25%	10%

Past performance is not necessarily a guide to future performance. The value of investments and income from them can fall as well as rise. The opinions expressed here represent the views of Sloane International at the time of printing and should not be interpreted as investment advice.

Sloane Investments is not authorised by the FSA or SEC and is not regulated by them to give investment advice.

SLOANE INTERNATIONAL DEVELOPMENTS

The Edridge • 4-20 Edridge Road • London • United Kingdom

GUIDE PRICE:

Apartments from  
**395,500 GBP (2 years)**  
**454,825 GBP (5 years)**

KEY LUXURY FACTS:

- Floor To Ceiling Glass
- High Vaulted Ceilings
- Real Wood Floors
- Granite Worktops
- 2500Sq Ft Pro-Gym
- 24 Hr Security & Concierge
- 2000 Sq Ft - Residents Zen Massage & Beauty Spa
- Childrens School
- Swimming Pool
- Roof Gardens

KEY DISTANCES FROM THE EDRIDGE:

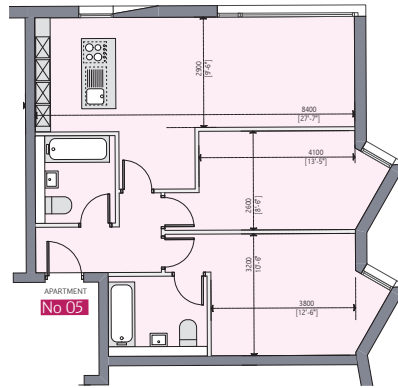
Big Ben	11 Miles
Knightsbridge	12 Miles
Heathrow	23 Miles
Gatwick	18 Miles
City Airport	17 Miles
Luton Airport	47 Miles

EXTERNAL ELEVATION

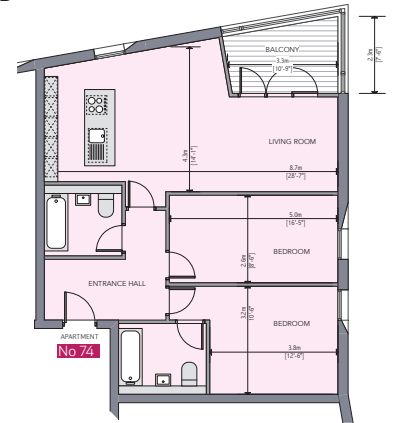


2 BEDROOM APARTMENT FLOORPLAN

Type A



Type B



LOCATION MAPS



MAP 1 LONDON MAP SHOWING PROXIMITY TO LONDON AIRPORTS



MAP 2 SHOWING PROXIMITY TO KEY LONDON LAND MARKS

FINANCIAL GRAPHS

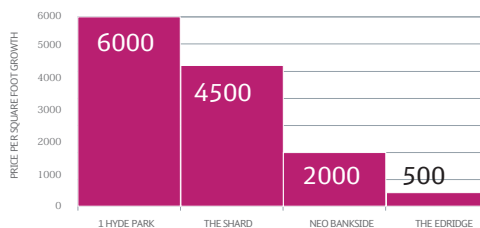


TABLE 1 PRICE PER SQUARE FOOT COMPARISONS OF CURRENT LONDON DEVELOPMENTS

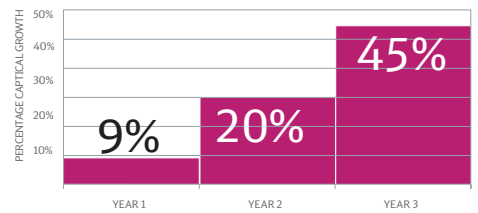


TABLE 2 PROJECTED GROWTH PER YEAR IN PERCENTAGE TERMS SHOWS THE TOTAL CAPITAL UPLIFT TO BE AROUND CIRCA 45% OVER 3 YEARS

2 YEAR PAYMENT PLAN

	On signing the contract	2 Months from the earlier payment.	2 Months from the earlier payment.	2 Months from the earlier payment.	3 Months from the earlier payment.	3 Months from the earlier payment.	3 Months from the earlier payment.	3 Months from the earlier payment.	On Completion
%	10%	10%	10%	10%	10%	10%	10%	10%	20%

5 YEAR PAYMENT PLAN

	On signing the contract	1-4 Months at % per month	5-8 Months at % per month	9-52 Months at % per month.	53-60 Months at % per month
%	10%	5%	2.5%	1.25%	10%

Past performance is not necessarily a guide to future performance. The value of investments and income from them can fall as well as rise. The opinions expressed here represent the views of Sloane International at the time of printing and should not be interpreted as investment advice.

Sloane Investments is not authorised by the FSA or SEC and is not regulated by them to give investment advice.

SLOANE INTERNATIONAL DEVELOPMENTS

The Edridge • 4-20 Edridge Road • London • United Kingdom

GUIDE PRICE:

Apartments from  
**452,500 GBP (2 years)**  
**520,375 GBP (5 years)**

KEY LUXURY FACTS:

- Floor To Ceiling Glass
- High Vaulted Ceilings
- Real Wood Floors
- Granite Worktops
- 2500Sq Ft Pro-Gym
- 24 Hr Security & Concierge
- 2000 Sq Ft - Residents Zen Massage & Beauty Spa
- Childrens School
- Swimming Pool
- Roof Gardens

KEY DISTANCES FROM THE EDRIDGE:

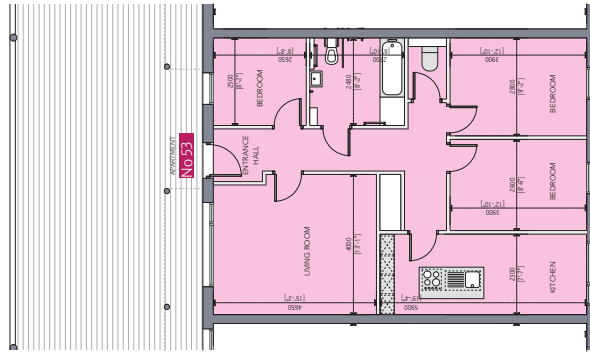
Big Ben	11 Miles
Knightsbridge	12 Miles
Heathrow	23 Miles
Gatwick	18 Miles
City Airport	17 Miles
Luton Airport	47 Miles

EXTERNAL ELEVATION



3 BEDROOM APARTMENT FLOORPLAN

Type A



LOCATION MAPS



MAP 1 LONDON MAP SHOWING PROXIMITY TO LONDON AIRPORTS



MAP 2 SHOWING PROXIMITY TO KEY LONDON LAND MARKS

FINANCIAL GRAPHS

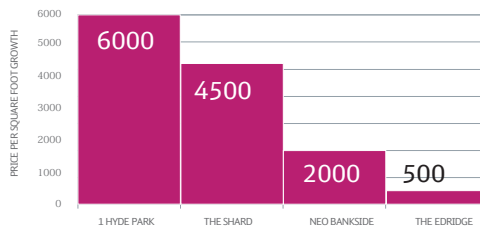


TABLE 1 PRICE PER SQUARE FOOT COMPARISONS OF CURRENT LONDON DEVELOPMENTS

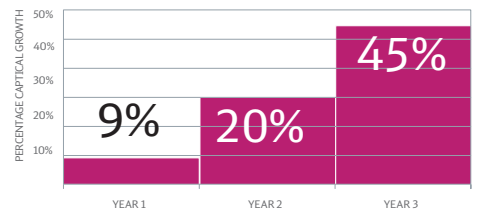


TABLE 2 PROJECTED GROWTH PER YEAR IN PERCENTAGE TERMS SHOWS THE TOTAL CAPITAL UPLIFT TO BE AROUND CIRCA 45% OVER 3 YEARS

2 YEAR PAYMENT PLAN

	On signing the contract	2 Months from the earlier payment.	2 Months from the earlier payment.	2 Months from the earlier payment.	3 Months from the earlier payment.	3 Months from the earlier payment.	3 Months from the earlier payment.	3 Months from the earlier payment.	On Completion
%	10%	10%	10%	10%	10%	10%	10%	10%	20%

5 YEAR PAYMENT PLAN

	On signing the contract	1-4 Months at % per month	5-8 Months at % per month	9-52 Months at % per month.	53-60 Months at % per month
%	10%	5%	2.5%	1.25%	10%

Past performance is not necessarily a guide to future performance. The value of investments and income from them can fall as well as rise. The opinions expressed here represent the views of Sloane International at the time of printing and should not be interpreted as investment advice.

Sloane Investments is not authorised by the FSA or SEC and is not regulated by them to give investment advice.